

TK Elevator Korea Ltd.

25 World Cup buk-ro 54-gil, Mapo-gu, Seoul, 03924, Korea
P +82-2-2610-7510, 7772



enta200

STEP INTO MOMENTS
OF STYLE



TK Elevator Korea

MOVES PEOPLE
- THE FUTURE OF URBAN MOBILITY

enta200: step into moments of style

Stylish and practical, enta200 has been engineered to meet the needs of low-rise residential and commercial applications. Stylish cabin designs combine with the practical features of this machineroom-less elevator to provide a comfortable ride and add value to your project.



Headquarter, Seoul



Cheonan Test tower (157m)

Cheonan Elevator Campus

TKE Korea's Cheonan Plant is a smart factory with an annual production capacity of 20,000 units. The factory has not only elevator production facilities, but also training, culture, and sports facilities, that's why we call it elevator campus.

We have...

- SMART FACTORY** Fully-automated production system based on IoT and big data
- TRAINING CENTER** Seed Campus for the training for employees and partner's employees
- CULTURE SPACE** Mini theater, café and customer showroom
- SPORTS FACILITIES** Indoor golf, table tennis, gym, basketball and volleyball facilities



STANDARD DESIGN



VENICE



ATHENS



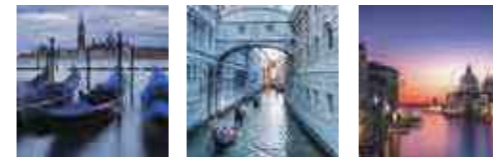
INCA

VENICE



CABIN DESIGN

Ceiling	CE-SE1C
Wall	STS Mirror, Supervib (Silver), Texcoat (Navy) + Seashell Panel, Texcoat (Navy), Fine Art (NFA-04)
Door	Fine Art (NFA-05)
COP	DS-J-TK11NSB HAS-J-TK11NSB
Handrail	HRR-01B
Floor	DET6258



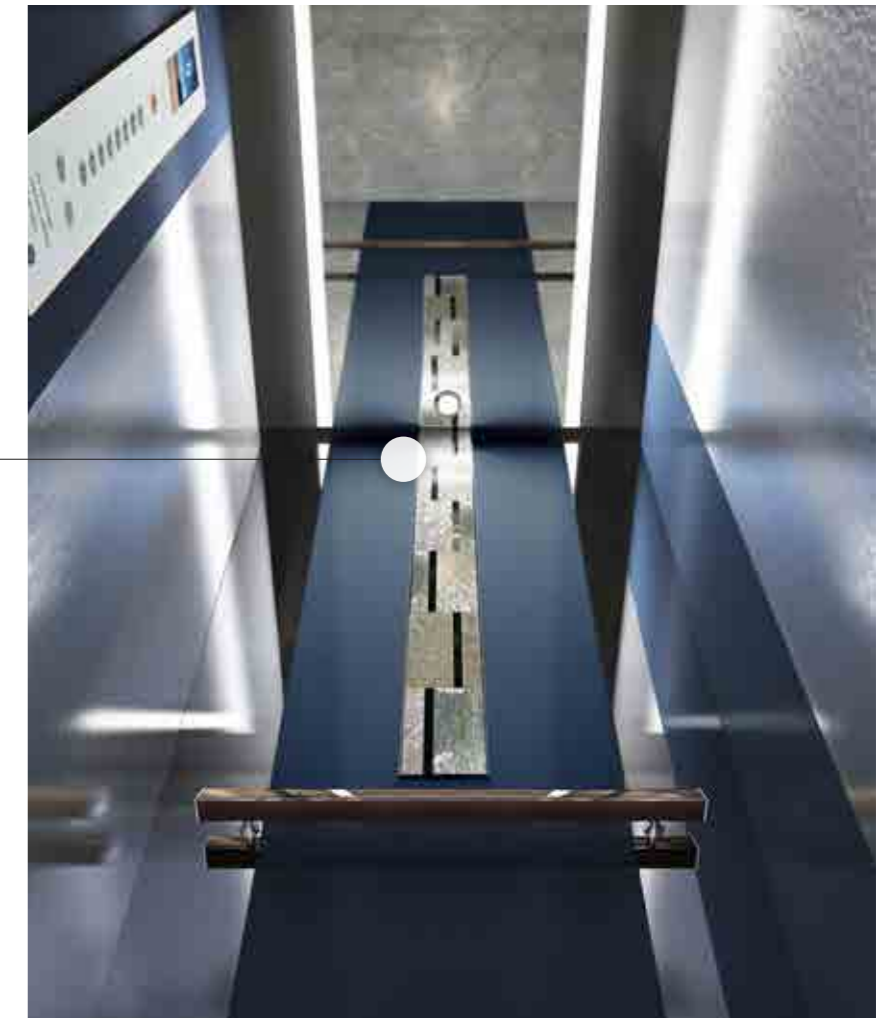
Material feature



An abstract twist on mother-of-pearl and glass adds Venetian sophistication.



Rich blues express the city's timeless link with the sea.



HRE-01B

Handrail (one rear side)



Main entrance



Other entrance



Entrance with control panel

ATHENS

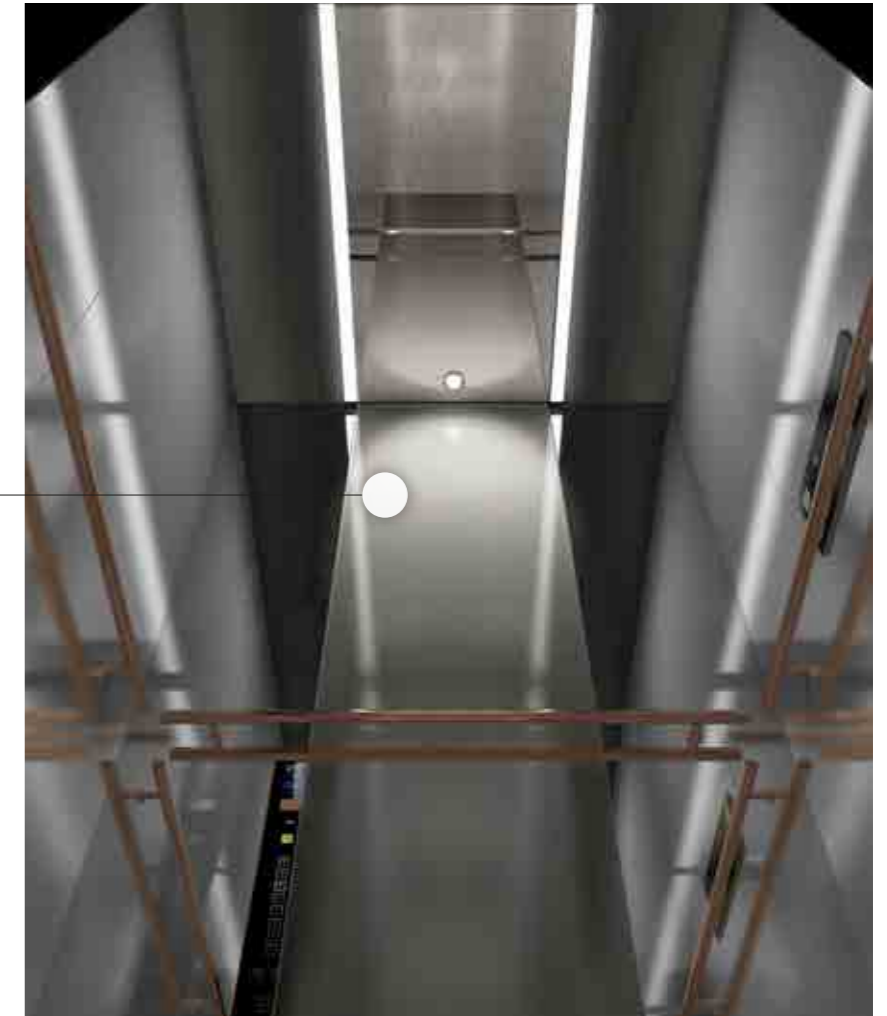
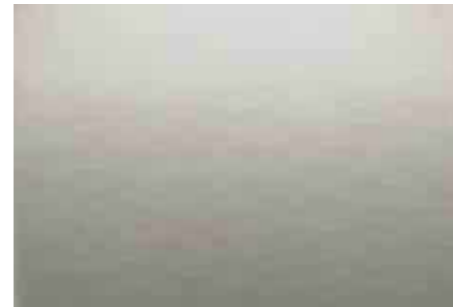


CABIN DESIGN

Ceiling	CE-SE1C
Wall	STS Mirror, Supervib (Deepgray), Hi-Touch (HT-02DG),
Door	Hi-Touch (HT-01DG)
COP	DS-K-TK11NBB HAS-K-TK11NBB
Handrail	HRR-01B
Floor	DET6272



Material feature



Modern design expressing the magnificence and mysteriousness of ancient cities.



Main entrance



Other entrance



Entrance with control panel

INCA

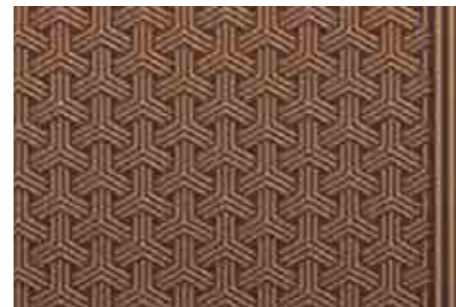


CABIN DESIGN

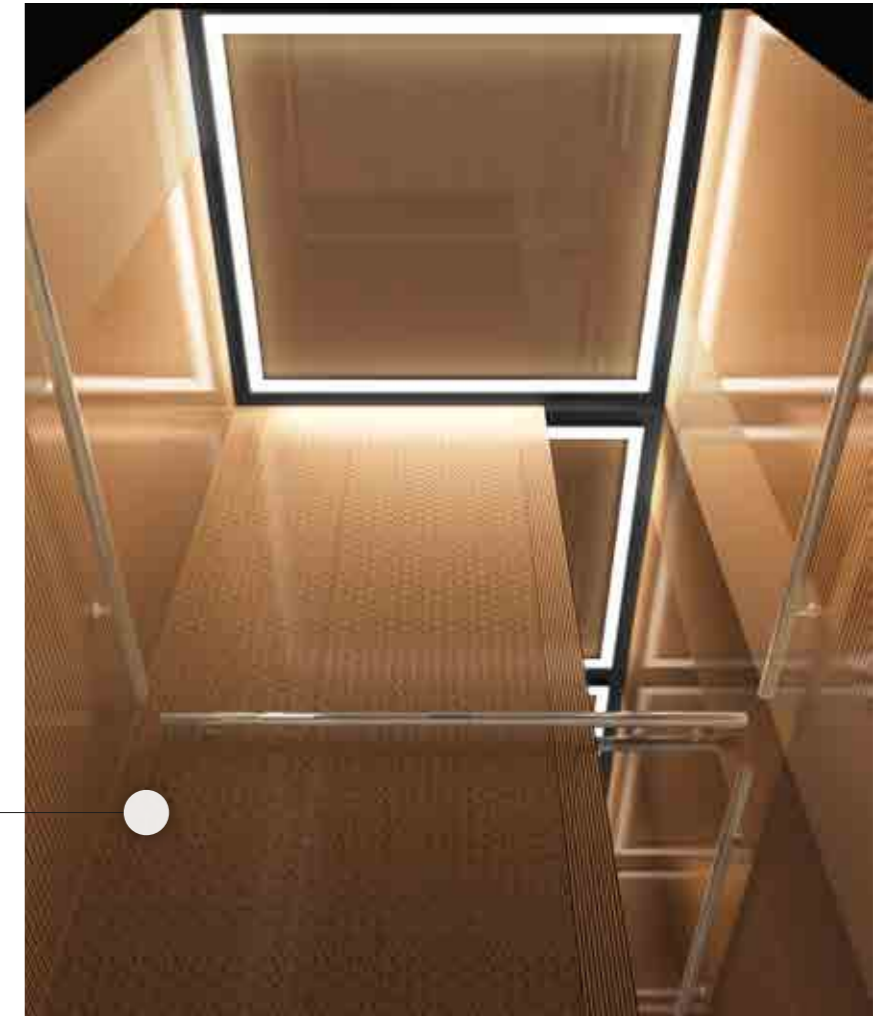
Ceiling	CE-SD2C
Wall	STS Mirror, Silk Metal (SP-04BR), Silk Metal (SP-05BR), Powder Coat (Inca brown)
Door	Silk Metal (SP-03BR)
COP	DS-J-TK11NSB HAS-J-TK11NSB
Handrail	HRR-01G
Floor	DET6240



Material feature



Classical design inspired by the ancient Inca Empire.



Handrail (one rear side)



Main entrance

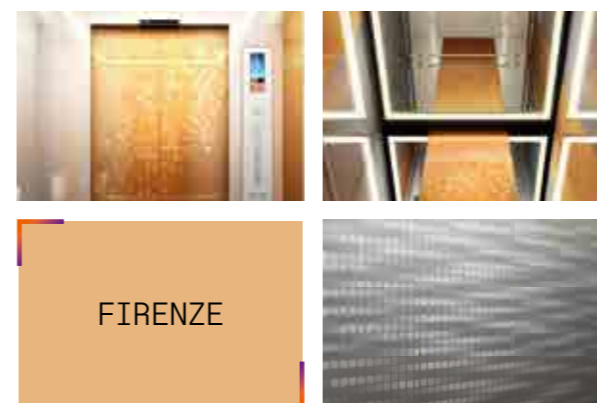
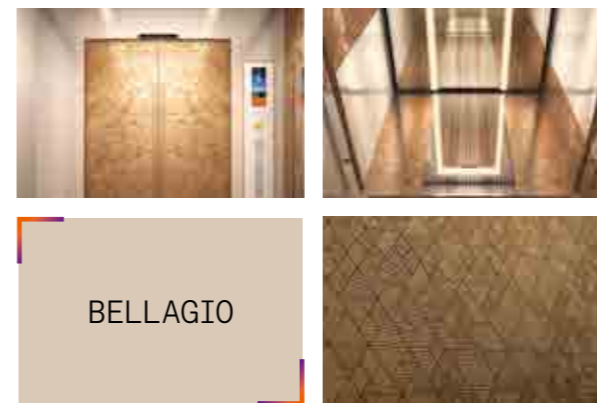
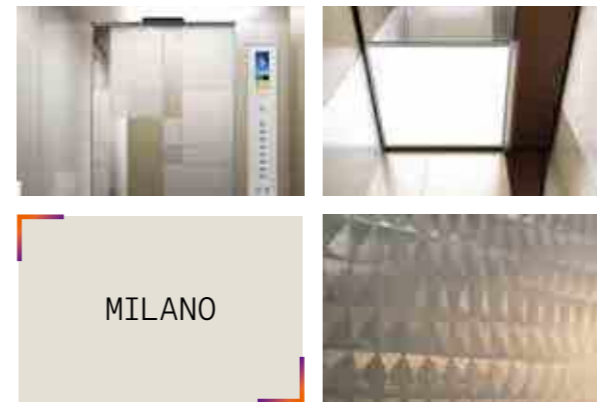


Other entrance



Entrance with control panel

PREMIUM DESIGN



MANHATTAN



CABIN DESIGN

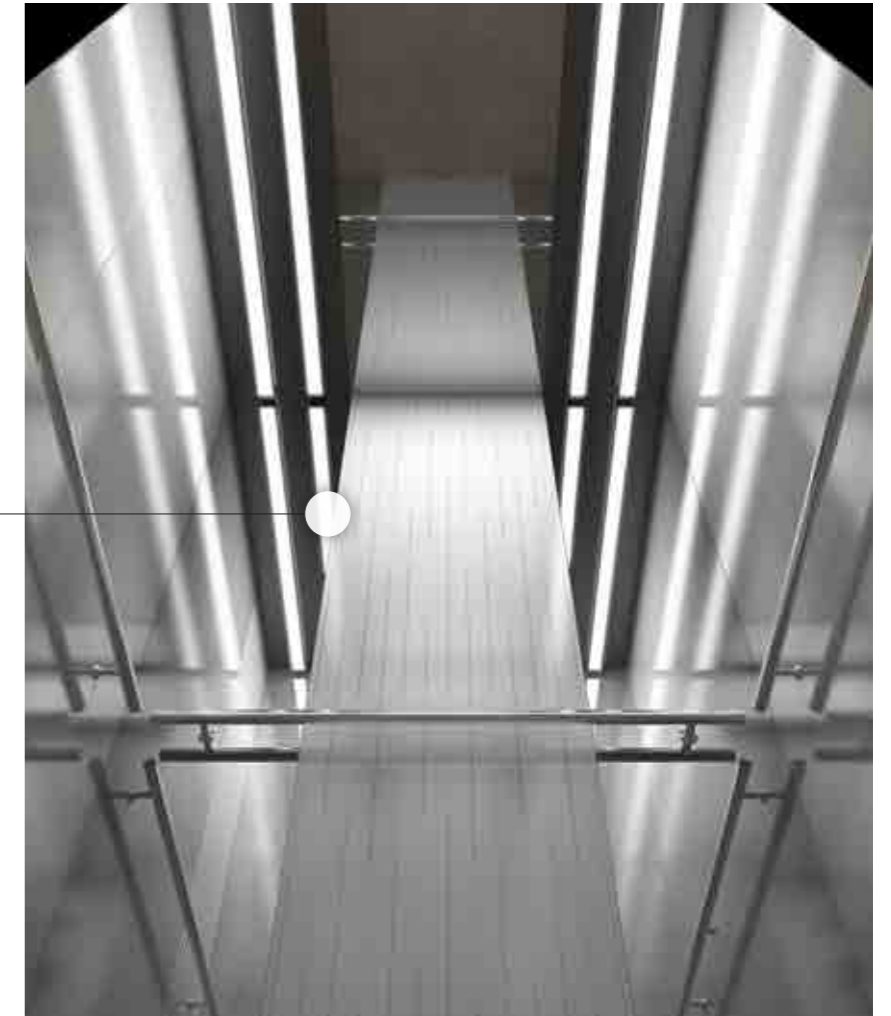
Ceiling	CE-SA1C
Wall	STS Mirror, Supervib (Silver), Hi-Touch (Rain)
Door	Hi-Touch (HT-01SV)
COP	DS-H-TK11NB HAS-H-TK11NB
Handrail	HRR-01G
Floor	DET6239 / DET2905



Material feature



Silver, mirrors and steel. Urban sensibility with a New York attitude.



Main entrance



Other entrance



Entrance with control panel

MILANO



CABIN DESIGN

Ceiling	FX-01
Wall	STS Mirror, Supervib (Silver), Hi-Touch (Gold)
Door	STS Mirror, Hi-Vib, Bead + Laser cutting (LM-20VB)
COP	DS-G-TK77G HAS-G-TK77G
Handrail	HRR-01G
Floor	DET2905 / DET2494



Material feature



Classic earth tones and patterns influenced by Mondrian.



Handrail (one rear side)



Main entrance



Other entrance



Entrance with control panel

BELLAGIO



CABIN DESIGN

Ceiling	CE-SB1W
Wall	Supervib (Silver), STS Mirror + Laser Graphic, Hi-Touch (HT-04BR)
Door	Hi-Touch (HT-03BR)
COP	DS-J-TK11NSB HAS-J-TK11NSB
Handrail	HRR-01B
Floor	DEW4713 / DET2251



Material feature



Inspired by the Bellagio Hotel, three dimensional patterns in bronze and gold reflect the opulence of Las Vegas.



HRE-01B

Handrail (one rear side)



Main entrance



Other entrance



Entrance with control panel

FIRENZE

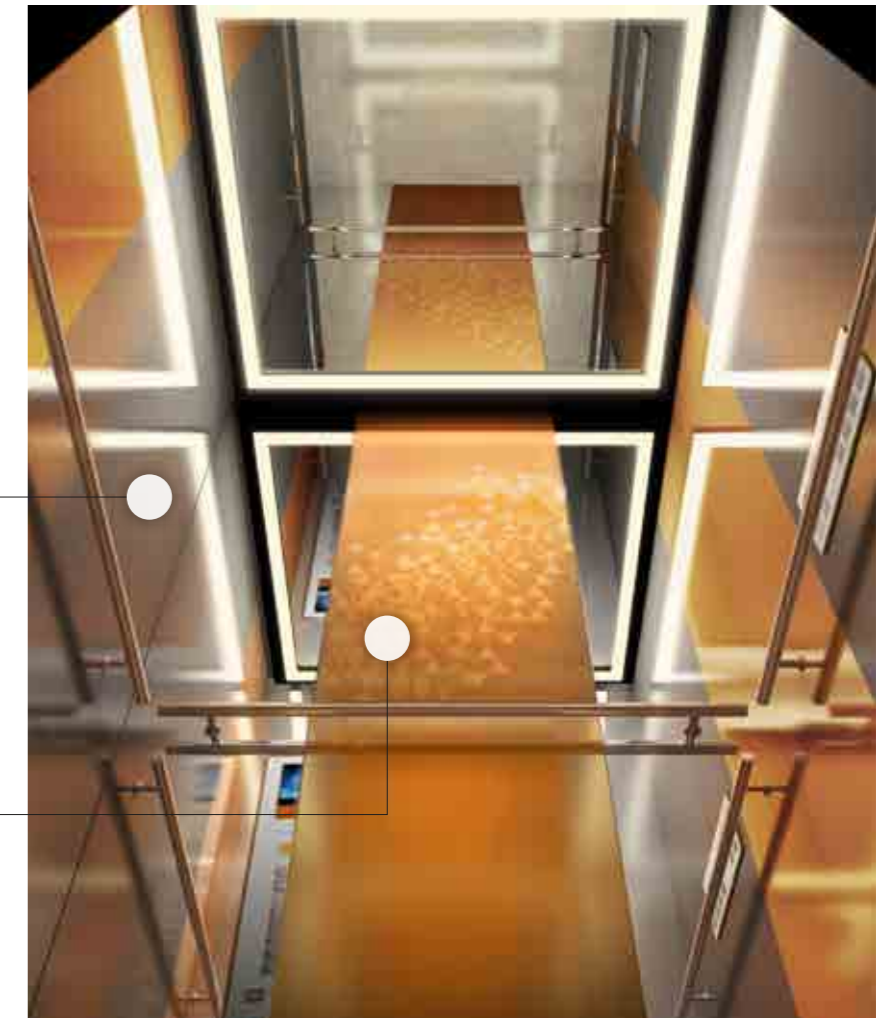


CABIN DESIGN

Ceiling	CE-SD3W
Wall	STS Mirror, Supervib (Silver), Fine Art (NFA-04), Superteel (Bronze) + Laser Graphic (ST-03BZ), Superteel (Bronze)
Door	Superteel (Bronze) + Laser Graphic (ST-02BZ)
COP	DS-J-TK11NSB HAS-J-TK11NSB
Handrail	HRR-01B
Floor	DET2251 / DET2245



Material feature



Inspired by night views of the Ponte Vecchio in Florence, this chic design is right up-to-date.



Handrail (one rear side)



Main entrance



Other entrance



Entrance with control panel

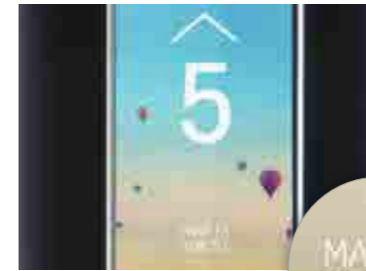
Stylish COP

With a focus on usability, the colorful LCD display makes information easier to read. The image moves in the direction of the elevator to give a reassuring 'visual sense' of movement.



Dynamic TFT LCD

Crystal clear, vibrant graphics put passengers at ease and guide them to their destination.



Scan to dynamic LCD



Attractive details

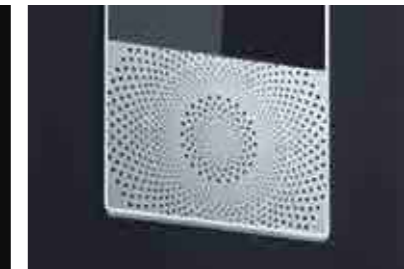
For a better design, we pay attention to the small details.



Anodized frame



Backlight



High quality sound

New color material

Aluminum material with rose brown color



Frame



Button



Speaker

LOP & LIOP

Unlike conventional flat fixture designs, these curved hall buttons have been meticulously designed to enhance the premium quality of any building. They deliver a superior user experience in terms of both look and feel.



Slim Look



Designed for an enhanced sense of proportion.

Touch button



Simplified UP/DOWN graphic design and state-of-the-art touch button.

Push button



Rounded button design in stylish sapphire-white.

Push button LOP / LIOP



Antibacterial button with NCC (Nano-ceramic Color Coating)



TK11NB



Fixtures

COP



DS-F-TT22 DS-G-TK77G DS-J-TK11NSB DS-H-TK11NB DS-K-TK11NBB

COP assisting the disabled



HAS-H-TK11NB HAS-G-TK77G HAS-K-TK11NBB HAS-J-TK11NSB

* Touch button can be applied for only white color COP up to 8 floors

Indicator



LOP / LIOP



BSM-TT44A BSM-TT44AD BSM-TK77G BSM-TK77GD BSM-TT44AL BSM-TK77GL

TFT LCD (Option)



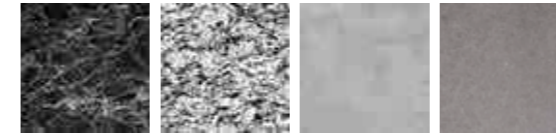
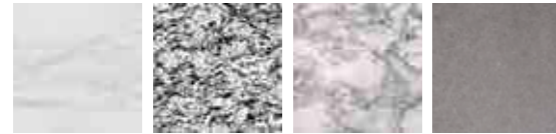
BSK-TT44 BSK-TT44D BSK-TK77B BSK-TK77BD BSK-TT44L BSK-TK77BL



BSN-TK11NB BSN-TK11NBD BSO-TK11NRB BSO-TK11NRBD

Hall Doors

Wall Color



Main Entrance



Other Entrance



Venice

Door	Main	Fine Art (NFA-05)
	Other	Texcoat (Navy)
Transom		Texcoat (Navy)
Jamb	Main	Supervib (Silver)
	Other	Supervib (Silver)
Hall button	Main	BSM-TT44A
	Other	BSM-TT44AD
Indicator		HD-S-30D

Athens

Door	Main	Hi-Touch (HT-01DG)
	Other	Supervib (Deep Gray)
Transom		Supervib (Silver)
Jamb	Main	Supervib (Silver)
	Other	Supervib (Silver)
Hall button	Main	BSN-TK11NB
	Other	BSN-TK11NBD
Indicator		HD-S-20D

Inca

Door	Main	Silk metal (SP-03BR)
	Other	Silk metal (SP-03BR)
Transom		Supervib (Bronze)
Jamb	Main	Supervib (Bronze)
	Other	Supervib (Bronze)
Hall button	Main	BSK-TT44
	Other	BSK-TT44D
Indicator		HD-S-20D

Manhattan

Door	Main	Hi-Touch (HT-01SV)
	Other	Supervib (Silver)
Transom		Supervib (Silver)
Jamb	Main	Supervib (Silver)
	Other	Supervib (Silver)
Hall button	Main	BSK-TT44
	Other	BSK-TT44D
Indicator		HD-S-20D

Milano

Door	Main	STS Mirror, Hi-Vib + Laser Cutting (LM-20V)
	Other	Supervib (Gold)
Transom		Supervib (Silver)
Jamb	Main	Supervib (Silver)
	Other	Supervib (Silver)
Hall button	Main	BSM-TT44A
	Other	BSM-TT44AD
Indicator		HD-S-30D

Bellagio

Door	Main	Hi-Touch (HT-03BR)
	Other	Silk metal (SP-02BR)
Transom		Supervib (Bronze)
Jamb	Main	Supervib (Bronze)
	Other	Supervib (Bronze)
Hall button	Main	BSO-TK11NRB
	Other	BSO-TK11NRBD
Indicator		HD-S-20D

Firenze

Door	Main	Superteel(Bronze)+ Laser Graphic (ST-02BZ)
	Other	Silk metal (SP-02BR)
Transom		Supervib (Bronze)
Jamb	Main	Supervib (Bronze)
	Other	Supervib (Bronze)
Hall button	Main	BSO-TK11NRB
	Other	BSO-TK11NRBD
Indicator		HD-S-20D

Comfortable Atmosphere



Air conditioning and Purification System

This system removes ultrafine dust and harmful gases inside the elevator cabins with HEPA filter.



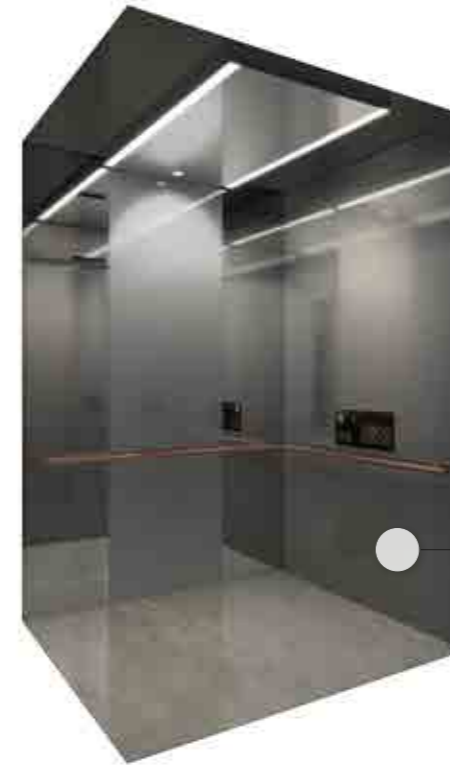
Purification of Ultrafine Dust



Filter replacement notice



Antibacterial Materials



COVID-19 Clean material

With NCC (Nano-ceramic Color Coating) material to block germs from the elevator lobby to the inside of the car.



Apply to

Transom, Jamb, Front Panel, Side Panel



Apply to

Transom, Jamb, Side Panel



Rear panel



Premium Options



Smart COP

Our Smart COP brings the elevator ride to the next level. With innovative features and a premium design, it provides a stylish passenger experience.



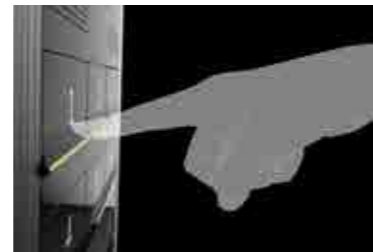
10° Tilted screen
The 10° tilted screen limits reflections, so it's easier to read.



Welcome light
When the doors are opening or closing, a blue welcome light blinks to alert the user.



Two color buttons
The backlit keys turn blue when the destination is selected.



Push type keyboard
Easy to use 10 digit push type keyboard.

Innovative features

Built right into the Smart COP to give your passengers the best experience.



Security
The embedded security camera with a 180° view of the cabin is accessible only to the building manager.



Handwriting
Use your fingers to write your destination directly on the touch screen.



RFID card reader
Use an RFID card or the contactless feature to directly access your floor.

Touchless Button



Scan to see the button

LED Hall Sill Flash

LED hall sills flash to indicate arrival and doors closing, supplementing hall lanterns and chimes for extra clarity. Intelligent in-car announcements are all fully adjustable to communicate cabin status clearly and calmly.

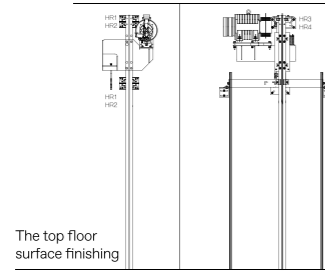


Scan to see hall sill

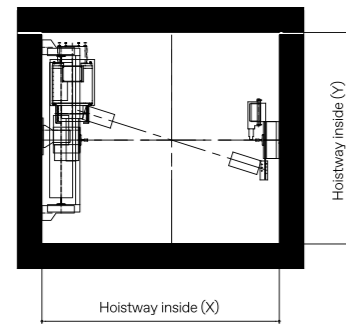


Planning Information

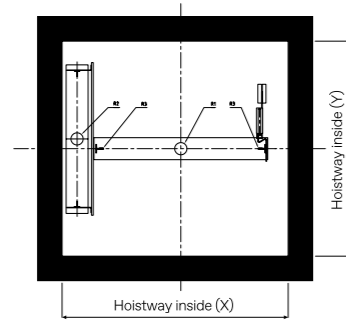
Overhead section



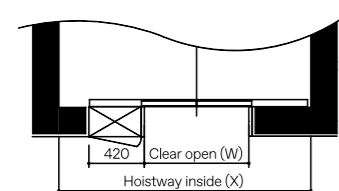
Overhead floor plan



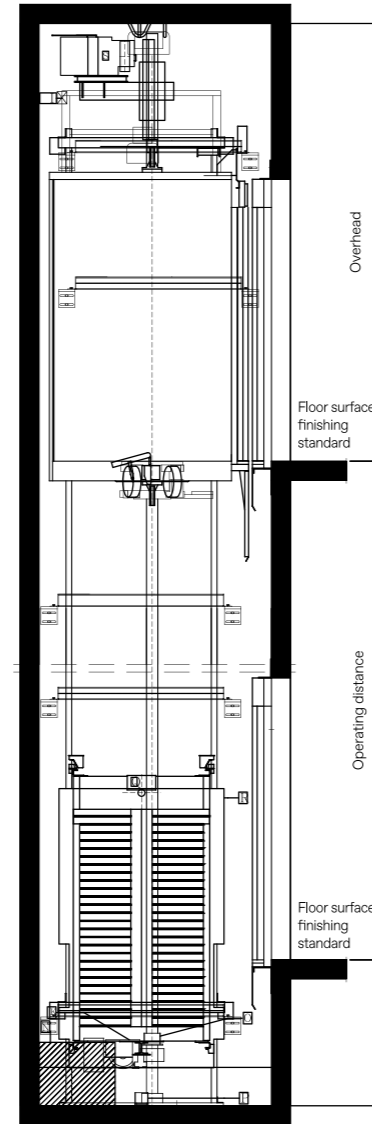
Pit floor plan



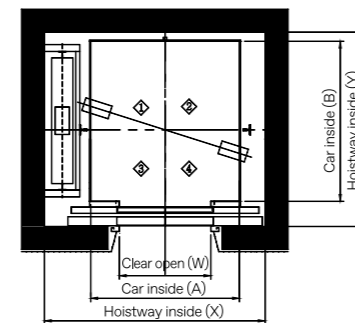
Detailed map of the three-sided top floor



Hoistway section



Hoistway floor plan



STANDARD SIZE (MINIMUM SIZE) & POWER CAPACITY

SPEED (M/S)	LOADING CAPACITY (KG)	DOOR OPENING (MM)	CAR SIZE (A×B) (MM)	CO SHAFT SIZE (X×Y) (MM)	2S SHAFT SIZE (X×Y) (MM)	MOTOR CAPACITY (KW)	MCCB CAPACITY (A)	HOOK APPLICATION LOAD (KG)
1.00	320	700 × 2100	850 × 1000	1600 × 1450	1440 × 1510	2.8		
	450		1000 × 1200	1750 × 1550	1630 × 1610			
	550 a		1100 × 1250	1800 × 1570	1680 × 1630			
	550 b		1200 × 1180	1850 × 1490	1780 × 1550	4.0		1500
	630 a	800 × 2100	1100 × 1400	1800 × 1710	1680 × 1770			
	630 b		1200 × 1250	1850 × 1570	1780 × 1630			
	680		1200 × 1350	1850 × 1690	1780 × 1750		20	
	750 a		1300 × 1400	1900 × 1710	1900 × 1770			
	750 b		1200 × 1450	1850 × 1760	1780 × 1820			
	800		1350 × 1400	2070 × 1710	1960 × 1770			
	900	900 × 2100	1600 × 1350	2200 × 1690	2230 × 1750	6.3		
	1000 a		1600 × 1400	2200 × 1710	2210 × 1800			
1000 b (Deep car)	800 × 2100 900 × 2100	1100 × 2100 1100 × 2100	1850 × 2410 2000 × 2410	1710 × 2470 1710 × 2470			3000	
1150 a	1000 × 2100	1800 × 1450	2400 × 1760	-				
1150 b	900 × 2100 1000 × 2100	1600 × 1650 1600 × 1650	2200 × 1960 2300 × 1960	- -	8.0			
1200 a	1000 × 2100	1800 × 1450	2400 × 1760	-		40		
1200 b	900 × 2100 1000 × 2100	1600 × 1650 1600 × 1650	2200 × 1960 2300 × 1960	- -	8.3			
1.50	550 a		1100 × 1250	1800 × 1570	1680 × 1630			
	550 b		1200 × 1180	1850 × 1490	1780 × 1550			
	630 a		1100 × 1400	1800 × 1710	1680 × 1770	6.0		1500
	630 b	800 × 2100	1200 × 1250	1850 × 1570	1780 × 1630			
	680		1200 × 1350	1850 × 1690	1780 × 1750			
	750 a		1300 × 1400	1900 × 1710	1900 × 1770			
	750 b		1200 × 1450	1850 × 1760	1780 × 1820			
	800		1350 × 1400	2070 × 1710	1960 × 1770			
	900	900 × 2100	1600 × 1350	2200 × 1690	2230 × 1750	9.5		
	1000 a		1600 × 1400	2200 × 1710	2210 × 1800		40	
	1000 b (Deep car)	800 × 2100 900 × 2100	1100 × 2100 1100 × 2100	1850 × 2410 2000 × 2410	1710 × 2470 1710 × 2470			3000
	1150 a	1000 × 2100	1800 × 1450	2400 × 1760	-			
1150 b	900 × 2100 1000 × 2100	1600 × 1650 1600 × 1650	2200 × 1960 2300 × 1960	- -	12.0			
1200 a	1000 × 2100	1800 × 1450	2400 × 1760	-				
1200 b	900 × 2100 1000 × 2100	1600 × 1650 1600 × 1650	2200 × 1960 2300 × 1960	- -	12.5			

Remark: These dimensions are valid for elevators following the EN81-20/50 code

MACHINE BEAM REACTION VALUE & PIT REACTION VALUE

UNIT: KG

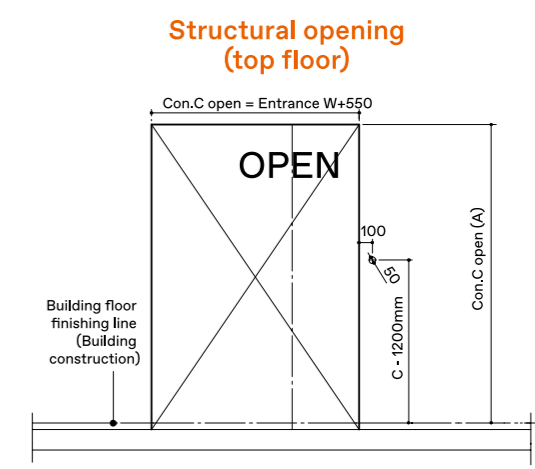
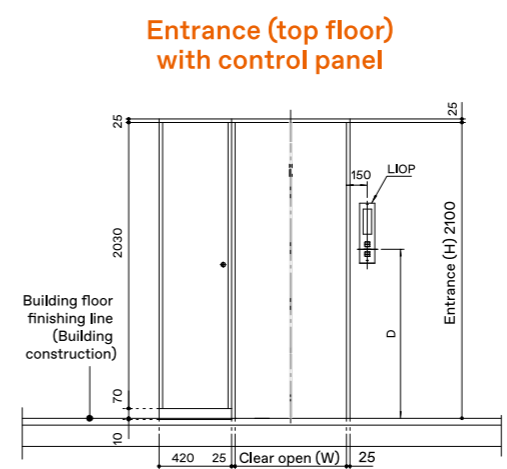
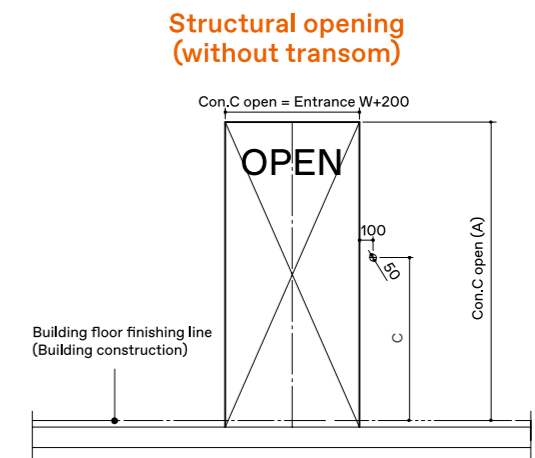
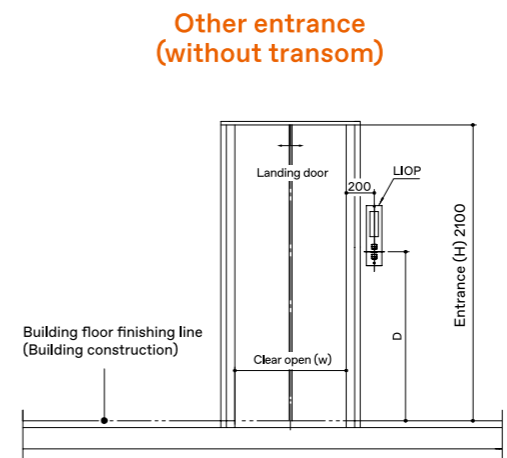
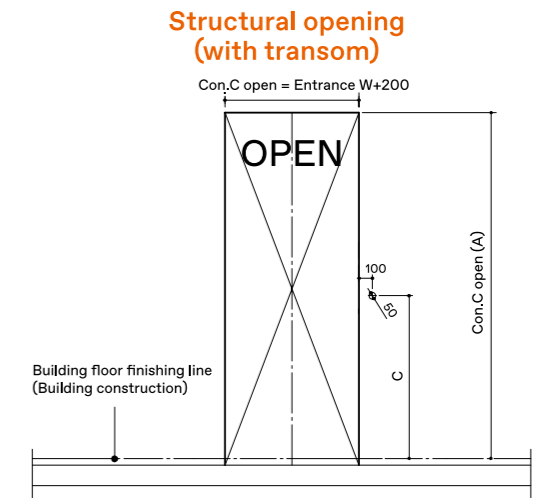
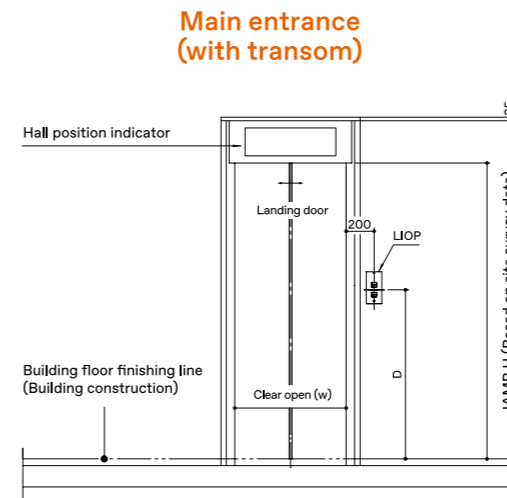
LOADING CAPACITY (KG)	GOV-AXIS CAPACITY (WALL-HORIZONTAL WEIGHT)	GOV-AXIS CAPACITY (WALL-VERTICAL WEIGHT)	TM-AXIS CAPACITY (WALL-HORIZONTAL WEIGHT)	TM-AXIS CAPACITY (WALL-VERTICAL WEIGHT)	CAR-AXIS BUFFER IMPULSE LOADING	CWT-AXIS BUFFER IMPULSE LOADING	CAR-AXIS IMPULSE LOADING AT EMERGENT STOP	GUIDE SHOE REACTION	
	HR1	HR2	HR3	HR4	R1	R2	R3	FX	FY
320					4430	3700	3500		
450					5230	4200	4000		
550 a					6100	4750	4520	88	90
550 b					6150	4790	4550		
630 a					6610	5070	4860		
630 b					6610	5070	4860		
680					7290	5630	5320		
750 a	650	300	1250	750	7790	5970	5740		
750 b					7670	5850	5650		
800					8460	6530	6180		
900					9640	7470	6930	175	225
1000 a					10140	7750	7220		
1000 b (Deep car)					10140	7750	7220		
1150 a					10770	8030	7550		
1150 b	800	450	1500	900	10980	8120	7660	215	260
1200 a									

OVERHEAD & PIT

SPEED (M/S)	OVERHEAD* (MM)		PIT (MM)
	BELOW 1000KG	EXCEED 1000KG	
1.00	3800	3900	1150
1.50	3900	4000	1500

*The overhead size needs to be adjusted when an air-conditioner is added to the car.
Remark: Marble floor and air-conditioner cannot be installed at the same time due to load limit.

Entrance



	WITH TRANSOM	WITHOUT TRANSOM	FOR THE DISABLED
Opening area height (A)	2500mm	2200mm	-